



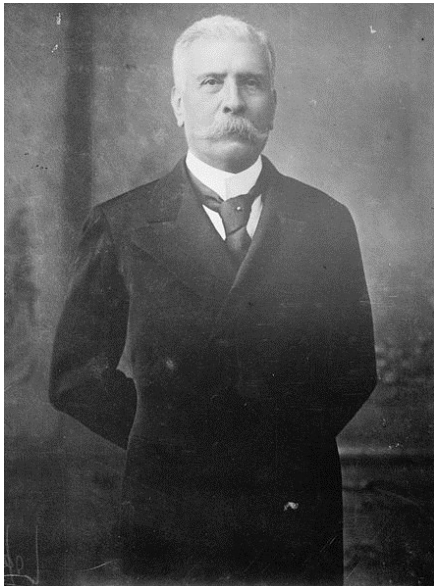
BENITO JUAREZ

Era of “La Reforma” (1850’s)

Juarez (A NATIVE Mexican Indian) had come to power as a liberal reformer after the disaster of the Mexican-American War and the caudillo style rule of Antonio Lopez de Santa Anna.

MAJOR FEATURES OF “LA REFORMA”

EFFECTS



PORFIRIO DIAZ

RULE OF PORFIRIO DIAZ

Diaz rules Mexico from 1876 to 1911. He represents the interests of the large landowners, wealthy merchants and foreign investors.

POSITIVES

NEGATIVES

EFFECT